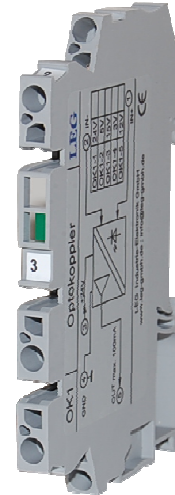


Resistor- / Diode Terminal

RT3 / DT3

Merkmale:

- Two resistors of your choice installed
- Two 1N4007 diodes installed
- For TS35 DIN rail mounting
- Can be daisy-chained via jumpers
- Tension spring connection
- 6.2 mm package
- High reliability, 5-year warranty



Description:

The devices in the RT3 series of resistor and diode terminals can be configured with either two resistors from the E48 series or 1N4007 diodes, depending on customer specifications. This allows for the connection of two identical or different resistors, for example, to create a voltage divider. The housing has a width of 6.2 mm, snaps onto a TS35 mounting rail, is stackable, and can be closed with the AP1 end plate, available as an accessory.

Application:

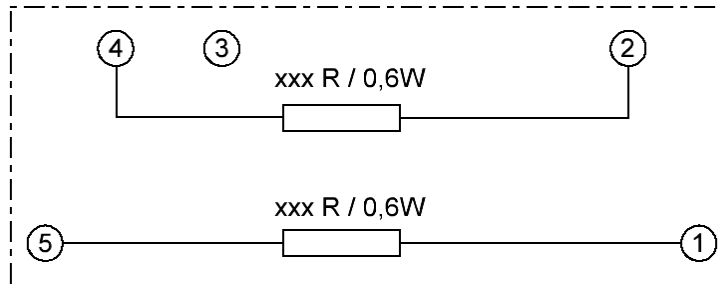
Pull-up resistors for ground-switching (NPN) outputs of, for example, light barriers or Hall sensors.
Creation of voltage dividers.
Freewheeling diode for DC contactors or valves

Translated with DeepL.com (free version)

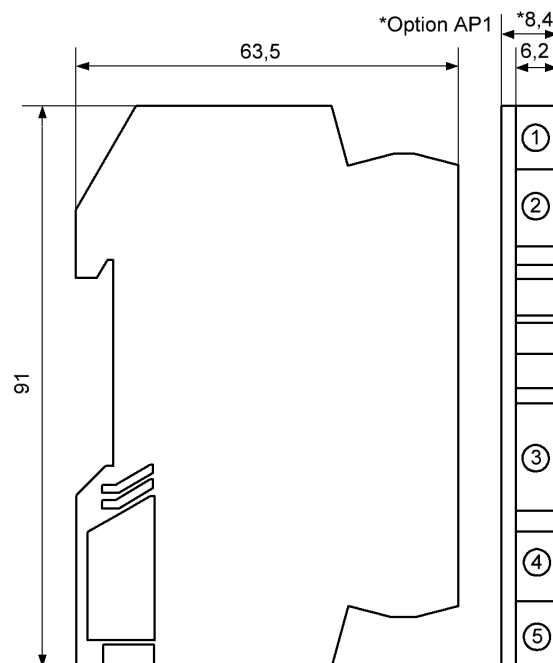
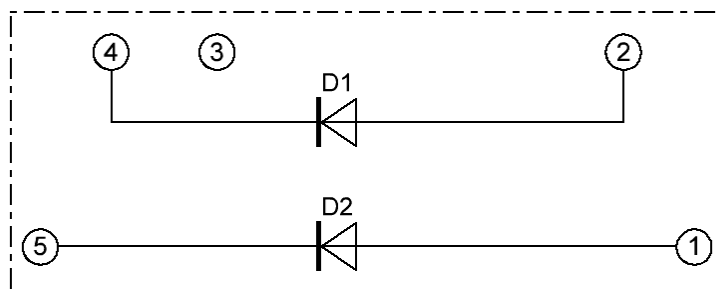
Order Code:

	Resistor 1	Resistor 2:
RT3-xxK-xxK	10k	4k7
	Diode	Diode
DT3-4007	1N4007	1N4007

Resistor Terminal RT3



Diode Terminal DT3



Technische Daten

Resistor Circuit:

Resistor	:	optional, E 48 series
Material	:	metal film
Tolerance	:	± 1%
Temperature coefficient:	:	± 50 ppm / °C
Power	:	max. 0.6W
Voltage	:	max. 250V

Diode circuit:

Diode	:	1N4007
Current rating	:	max. 1A
Reverse voltage	:	max. 1000V

General data:

Operating temperature	:	0...50°C
Storage temperature	:	-25...+85°C, condensation before putting into operation is not allowed
CE conformity	:	EN 61326-1, EN 61000-4-2/3*/4/5/6*, EN 61000-6-4 * during measurements are small deviations possible
MTBF	:	1500 years Mean Time Between Failures according to EN 61709 (SN 29500). Requirements: Stationary operation in well-maintained rooms, average ambient temperature 40 °C, no ventilation, continuous operation

Body:

Dimension	:	See drawing, 6,2mm terminal block body, 6,2x63,5x91 mm
Material	:	PA 6, 6 / V2
Protection category	:	IP00, IP20 with side cover/end cover plate
Connection	:	Spring force connection 0, 2 - 4mm ² , inflexible, 0, 2 – 2,5mm, flexible Contact load with link plugs max. 24A
Fixing	:	Snap-on mounting for norm rail TS35
Weight	:	21g
Mounting position	:	As you like / Mountable side by side

Note on safety:



Disconnect the power supply before attempting to open the unit.

During the operation of this module it is possible that parts of the module, even there is extra-low voltage, (for example shunt measurement) are under dangerous voltage! Therefore a non-observance of this caution may cause damage of property or physical injury.

Only trained qualified personnel should install or operate the unit. Before installation the qualified personnel should read the documentation and should familiarize themselves with the unit.

If there is visible damage to the body of the unit it should be immediately replaced and not put into operation.



Please ensure that there is a sufficient prevention against electrostatic discharge during installation of the unit.

Installation Information:

Pay attention and make sure the unit is far away from mounted sources that may disturb the device such as magnetic coils, transformers, frequency converters etc.

Wiring advise:

Use only shielded cables. The shield is to be connected extensively to ground. Do not mix power- and signal-wires/cables in the same cable tray.

Limited guarantee:

The LEG Industrie-Elektronik GmbH warranted that the product does not have any material or processing defects in a period of 5 years after date of delivery.

It is up to the choice of LEG to repair or to exchange an inoperative unit.

Subsequent damages or any claim for indemnification above the functionality of the unit are excluded.

This limited warranty is only valid if ...

1. the product was installed and put into operation according to the LEG operation documentation;
2. the technical configuration of the power supply was abided;
3. the product was not used for unintended purposes;
4. there were no unauthorized modifications or manipulations, misuse or repairs without previous agreement from LEG .

Our Terms of Trade are based on the “General Conditions for the supply of products and services of the Electrical and Electronics Industry” including the “Complementary Clause: Extended Reservation of Property” of the ZVEI e.V. (German Association of Electrical Manufacturers).

Miscellaneous:

We expressly reserve the right, without previous notice, to correct errors contained in any data of this information brochure, and to make alterations to the program and technical modifications.